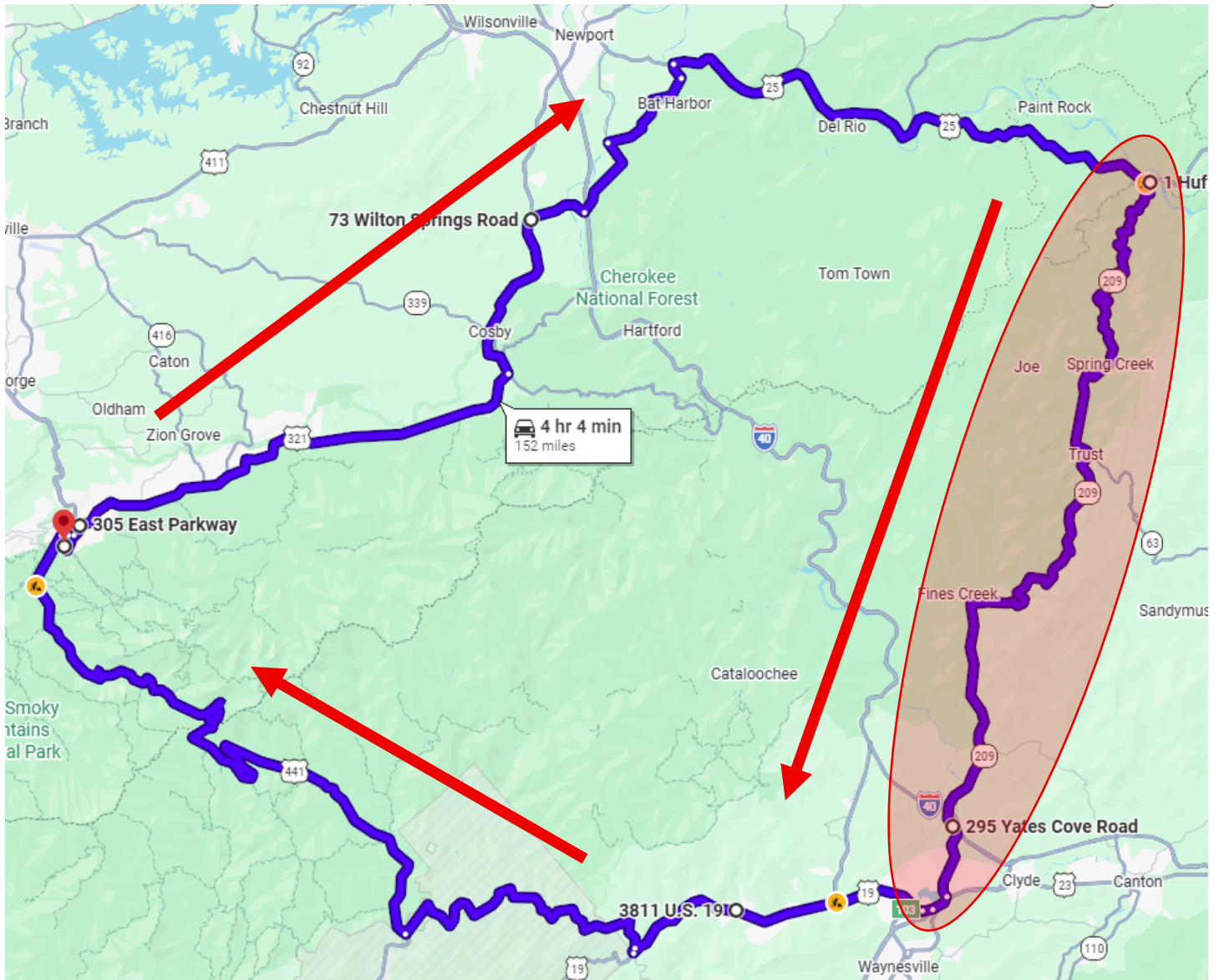


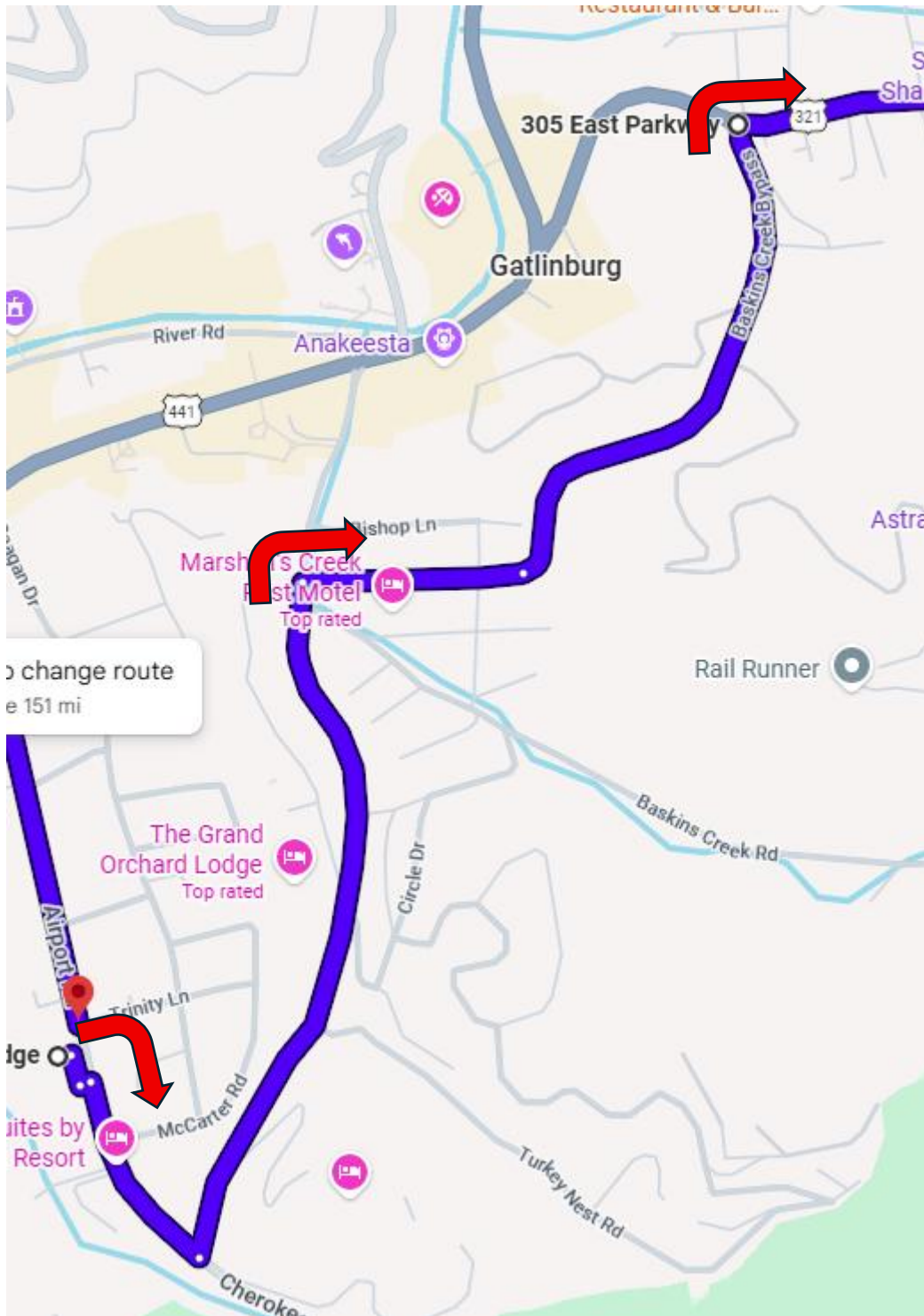


The Rattler

(Approximately 152 miles)



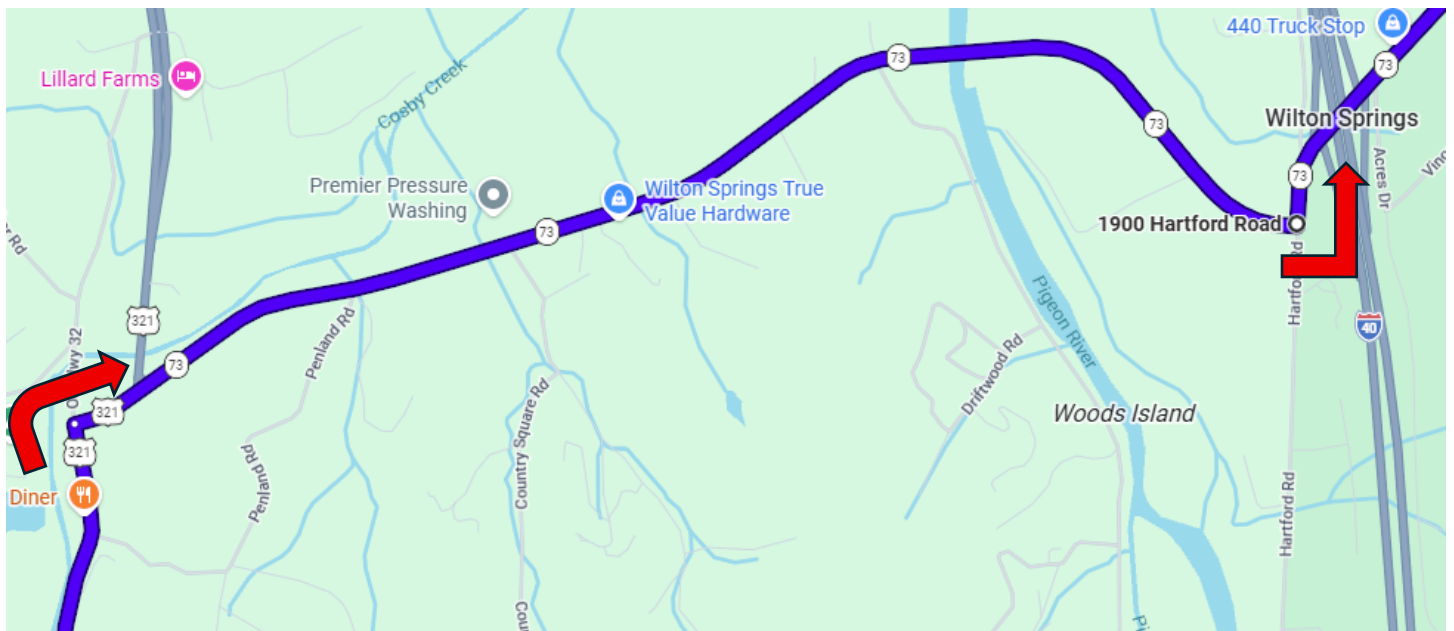
Complete Route



- **RIGHT** out of Glenstone Lodge
- **LEFT** onto Cherokee Orchard Rd
- **RIGHT** onto Newton Ln / Baskins Creek Bypass
- **RIGHT** onto East Pkwy / US 321 / Hwy 73
- **CONTINUE** on US 321 / Hwy 73 for approximately 18 miles



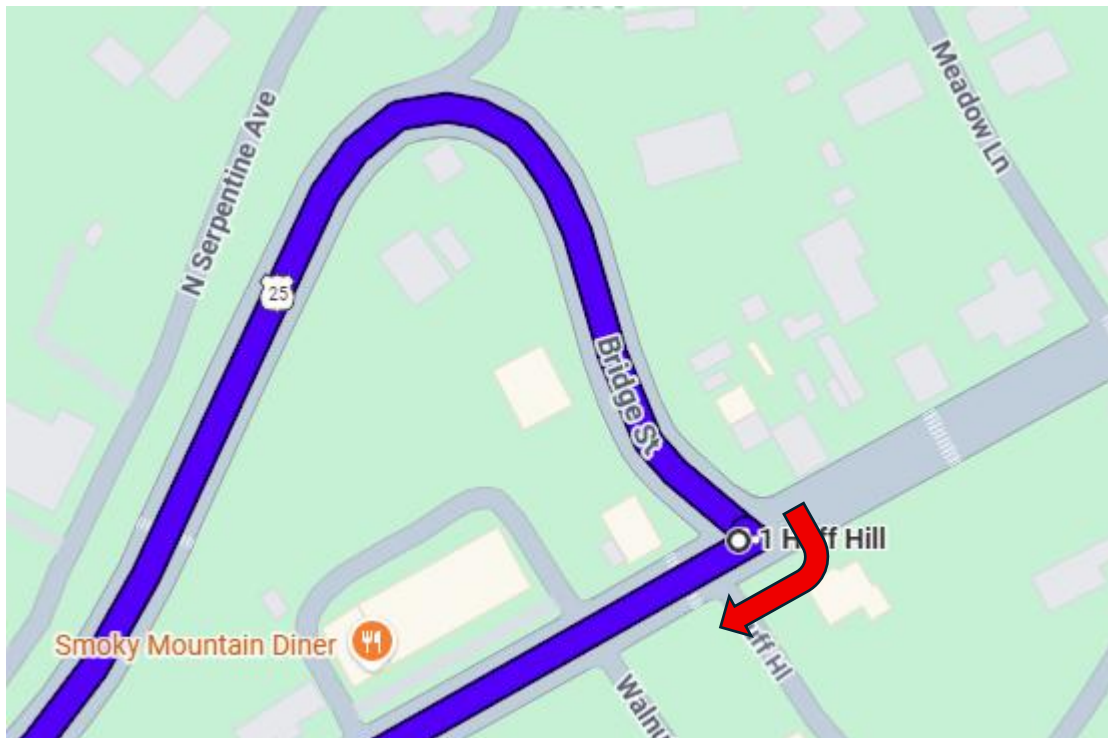
- **LEFT** onto US 321 / Hwy 73 / Hwy 32
- **CONTINUE** on US 321 / Hwy 73 / Hwy 32 for approximately 9 miles



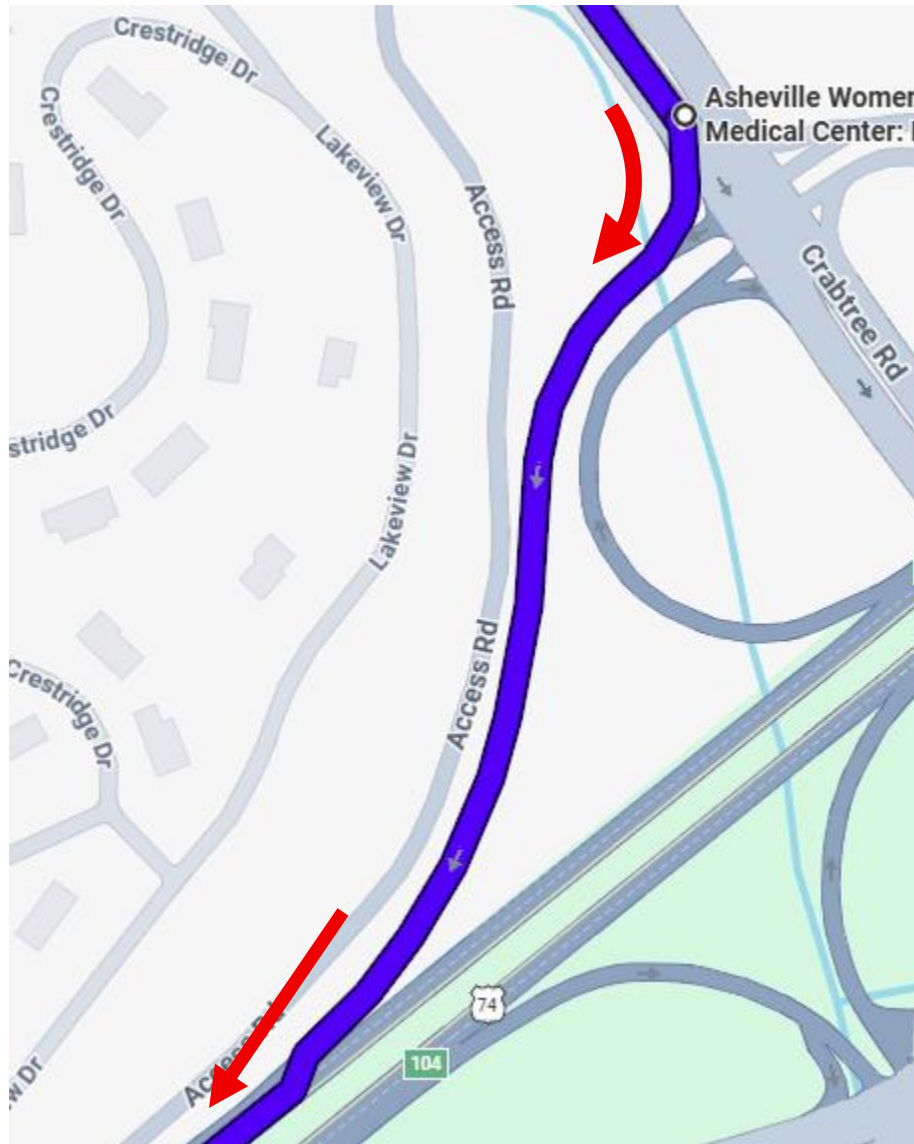
- **RIGHT** onto US 321 / Hwy 73 / Wilton Springs Rd
- **CONTINUE** straight on Hwy 73 / Wilton Springs Rd for approximately 1.5 miles
- **LEFT** onto Hartford Rd
- **CONTINUE** on Hwy 73 for approximately 3.3 miles



- **RIGHT** onto Edwina Bridgeport Rd
- **CONTINUE** on Edwina Bridgeport Rd approximately 4.5 miles to US 25



- **RIGHT** onto Hwy 209 / Lance Av
- **CONTINUE** on Hwy 209 **"The Rattler"** for approximately 36 miles towards Lake Junaluska



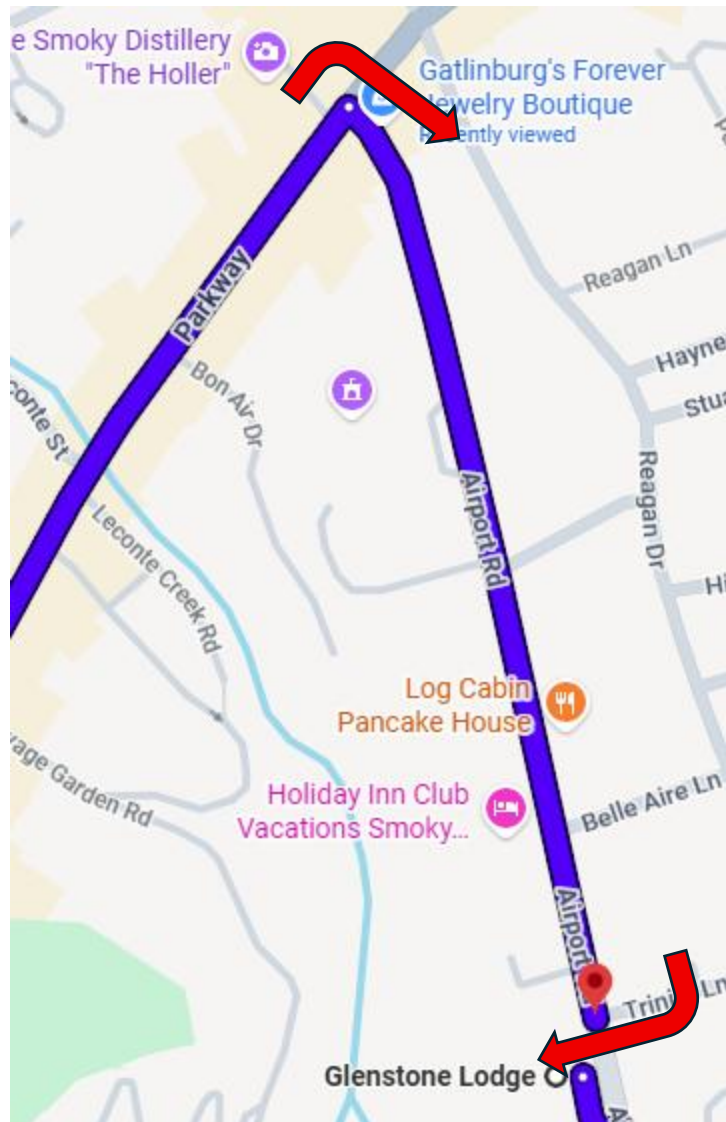
- **BEAR RIGHT** towards US 19
- **MERGE** onto US 19
- **CONTINUE** on US 19 for approximately 13 miles to Blue Ridge Pkwy



- **RIGHT** towards Blue Ridge Pkwy access ramp
- **LEFT** onto Blue Ridge Pkwy
- **CONTINUE** on Blue Ridge Pkwy approximately 13 miles to US 441



- **RIGHT** onto US 441
- **CONTINUE** on US 441 for approximately 31 miles towards Gatlinburg



- **RIGHT** at Airport Rd
- **RIGHT** into Glenstone Lodge